

Year 2

Autumn 1a

**Establishment Phase
Harvest**

Geography/History

Where do we live? Human and physical characteristics of Ewell
Exploring the UK and Europe.



Religious Education

Who is God?
Who is Jesus?
Why is the church important to people of different faiths?



Design and Technology

Wheels and Axles
How do they work?



Computing

Online safety and behaviour using different resources.

Algorithms – what is an algorithm?



×

Mathematics

Counting, comparing and ordering numbers.
Place value and partitioning.
Calculations.

–

+

÷



English

Exploring stories with familiar settings.
Letter writing, retelling, role play, story maps, planning and writing stories.



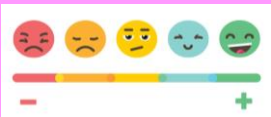
Science

Healthy lifestyle:
Hygiene rules, exercise and balanced diet.

Basic needs of animals including humans.

PSHE

Golden Rules, safety in and around the school,
Managing our feelings; who we can talk too.



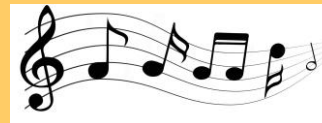
Physical Education

Dance and Multi-skills



Music

Hand, feet and heart
South African music
Pulse and rhythm.
Listen and appraise.



Art and Design

Colour and tone
Mixing and matching colours.



Water colour and pastels