

Year 1

Autumn 1a

Transition to Year 1 Establishment Phase

Geography

We will be looking at our immediate environment of our school and the local area of Ewell.

We will also be exploring seasonal change and what happens in the change from Summer to Autumn.

Religious Education

Christianity

Who is Jesus?
Where do Christians worship? We will be talking about Christianity and the events from the life of Jesus.

Why is Harvest celebrated around the World?

Design and Technology

We will be looking at mechanisms such as levers and exploring where they are found and how they work.

Computing

We will be exploring what an algorithm is (a series of instructions) and the need for commands to be ordered and precise.

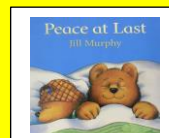
We will be talking about the importance of Online Safety.

Mathematics

Number

Ordering
Counting (2s and 10s)
Grouping
Using < and >
Place value

Stories from familiar settings English



Reading, phonics, SPaG and comprehension.

Science

Animals including humans

We will be exploring our 5 senses and naming parts of the body.
We will also be sorting animals into categories and exploring their key features.

PSHE

Golden Rules.

We will be thinking and talking about how to stay safe in and around the School. We will be continuing to follow personal hygiene routines.

We will also be exploring how everyone is different and unique.

Physical Education

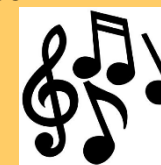
We will be developing our spatial awareness and our throwing and catching techniques.

We will also be exploring movements in response to music.

Music

Hey, you

Listen and appraise
Finding the pulse
Rhythm games
Exploring pitch



Art and Design

We will be looking at William Turner and Van Gogh's work and make comparisons.

We will also be using oil pastels and watercolours to experiment with colour and tone.